

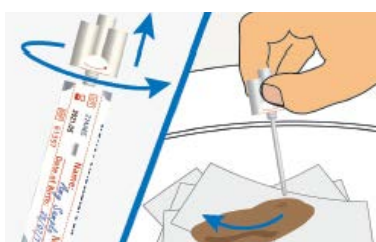
Faecal immunochemical test (qFIT) instructions

Instructions for the GP surgery

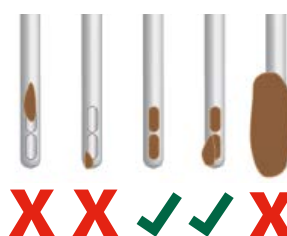
- Request 'Faecal immunochemical test (qFIT)' in ICE.
- Before giving the faecal picker collection device to the patient, place the ICE patient identification bar code sticker onto the collection device. It is okay to cover the bar code that is on the device.
- Give the patient this instruction sheet, faecal picker collection device and a specimen bag. Discuss with them how to collect a sample.

Instructions for the patient

1. The faecal (stool) sample must not touch the toilet water.
2. To cleanly catch the stool sample, either:
 - place several layers of folded toilet paper onto the toilet bowl surface
 - place your hand into a clean disposable plastic bag
 - use a clean disposable container
3. Take the stool collection device and unscrew anti-clockwise the top. Gently pull out the sampling stick.



4. Carefully scrape the end of the stick along the stool sample so that all the holes at the end of the stick are filled, but the rest of the stick remains clean.



5. Return the sampling stick into the collection device and twist clockwise once to closely secure.
6. Write the date on the collection device label (the label with your name on it).
7. Place the collection device into the plastic specimen bag and seal.
8. Please return the sample to your GP surgery without delay.

